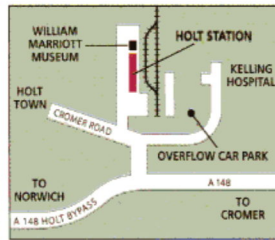


# THE WILLIAM MARRIOTT MUSEUM AT HOLT STATION

[www.wmmuseum.org](http://www.wmmuseum.org)



Holt Station and the William Marriott Museum are just off the A148 east of Holt town at High Kelling. Free parking for cars and (by prior arrangement) coaches. There is a bus connection linking the station with Holt town on Mon – Sat when the red steam service is running (see timetable leaflet or [www.nnrailway.co.uk](http://www.nnrailway.co.uk)); tickets must be bought at Holt or Sheringham stations.



The M&GN Joint Railway Society's Class B12 no. 8572 was built in 1928 for LNER express services to East Anglia. The only working inside-cylinder 4-6-0 loco in Europe returns to the Poppy Line in 2010 after a major overhaul.

### About the Collection

The Museum aims to tell the story of the M&GN Joint Railway and its predecessors, from inception in 1893, when the Great Northern and Midland Railways jointly acquired the Eastern & Midlands Railway, until its closure by British Railways after WW2. The Collection concentrates on the Railway in Norfolk, where it was nicknamed (in both affection and exasperation) the Muddle & Get Nowhere.

The Collection includes items of railway equipment and furnishings, photographs, diagrams and maps, printed material and ephemera such as tickets and handbills. The Curator would appreciate the donation or loan of relevant items: contact him on [curator@wmmuseum.org](mailto:curator@wmmuseum.org)

Entry £1 adult, accompanied children under 15 free. Open from March to October from 11.00am to 3.30pm on days when steam trains are running (see Poppy Line timetable leaflet or website).

Extended hours during summer. School and party visits at other times by arrangement: call 01263 820 800 or email [curator@wmmuseum.org](mailto:curator@wmmuseum.org)

**WILLIAM MARRIOTT**  
MUSEUM

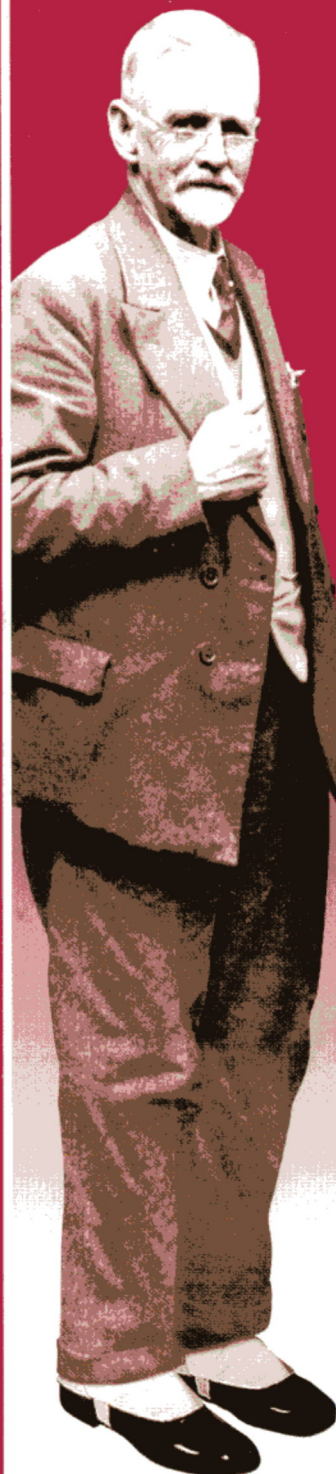
Norfolk County Council

EEDA



Midland & Great Northern Joint Railway Society, The Station, Sheringham, Norfolk NR26 8RA.  
A company limited by guarantee: no. 3355411. Registered charity no. 1063676/0

**LIVE STEAM – LIVING HISTORY**



# THE WILLIAM MARRIOTT MUSEUM

William Marriott  
built the Poppy Line  
and ran it for 40 years.  
The museum brings  
the heyday of  
the railway to life.

*William Marriott*

Open from March to October  
from 11.00am to 3.30pm on days  
when steam trains are running  
(see Poppy Line timetable leaflet  
or website). Extended hours  
during summer.

Adults £1,  
children under 15 free.



SHERINGHAM • WEYBOURNE • HOLT

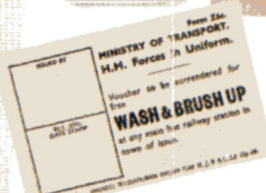
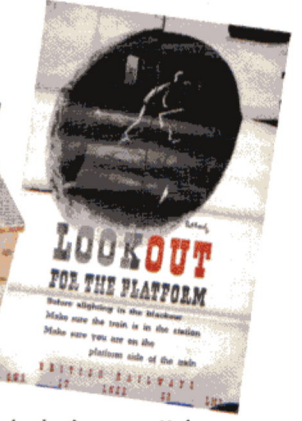
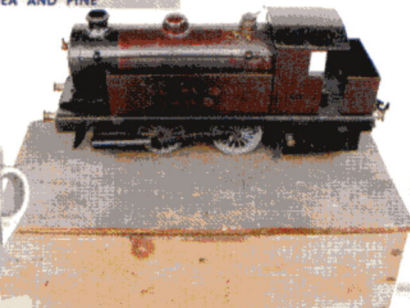
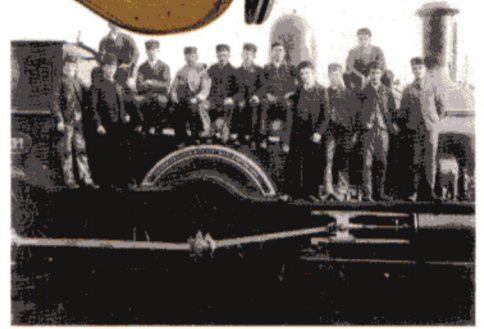
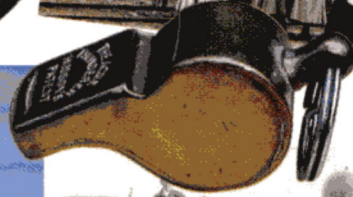
The William Marriott Museum  
at Holt Station  
[www.wmmuseum.org](http://www.wmmuseum.org)



**LIVE STEAM – LIVING HISTORY**

The steam locos, signals and stations of the Poppy Line bring the spirit of William Marriott's Midland & Great Northern Joint Railway vividly to life – more than 40 years after Dr Beeching axed the Holt to Sheringham section, and over 50 years since the closure of most of the network. Now the artefacts, photographs, maps, tickets and handbills in the William Marriott Museum add even more colour to the picture, and help you see the Railway in the context of the times when it was not only the area's lifeline, but also gave birth to the tourist industry in North Norfolk.

The displays in the Museum feature items collected over the years by the Midland & Great Northern Joint Railway Society. The Society is the registered charity that supports the Poppy Line, and is the majority shareholder in North Norfolk Railway plc. The Society owns four historic locomotives, heritage diesels, and noteworthy carriages and wagons. Members get generous travel discounts and an award-winning quarterly colour magazine. If you'd like to know more about the Society, pick up a leaflet on the Railway or visit [www.mandgn.co.uk](http://www.mandgn.co.uk)



The William Marriott Museum is housed in a replica of a typical M&GN Joint Railway goods shed next to Holt Station. Holt Station was first built as the station at Stalham ("Gateway to the Broads") in 1879-80: over 120 years later, it was rescued by enthusiasts and lovingly re-erected on its present site – with some 80% of the original materials and fittings being re-used. Holt Station Yard is also home to the former Midland Railway signalbox from Upper Portland Sidings, Kirkby-in-Ashfield, Nottinghamshire.