



swaffham
MUSEUM
2011

Family fun

Every school holiday Swaffham Museum puts on special activities for families. Call or visit our website for details.

Gift Shop and Tourist Information Centre

A super selection of gifts, postcards, local history books and Norfolk memorabilia. Plus the visitor centre for Swaffham town.

Access

Level access to ground floor and shop. Chair lift to first floor. Please call for more details.

Other good places to visit near by

Swaffham with its fascinating Town Trail and church. Ecotech Centre and the wind turbine, Oxburgh Hall and Castle Acre Priory and Castle.

Family and local history

Our reserve stores and archive collection are now available for pre-booked research visits. Conduct your own research or have us do it for you using the museum's extensive town archive. For information call or visit our website.

Schools and groups

The museum offers curriculum-based school visits and outreach services. Special rates and talks available for groups (12+). For information or to book, call or visit our website.

Friends of the Museum

Friends enjoy free entry year-round and can volunteer in many aspects of the running of the museum.

To find out more, phone, visit our website or ask at reception.

Admission 2011

Adult £2.50, Concession £1.50, Child (5 to 16) £1, Under 5s free
Discounts for families, schools and groups.
Free entry to Gift Shop & Tourist Information Centre

Opening times 2011

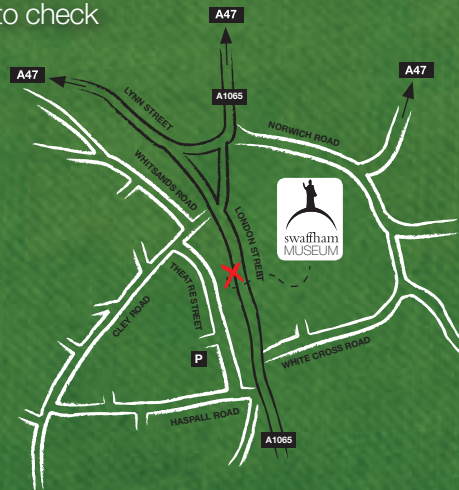
12 February to 23 December, Tue to Sat 10am to 4pm. Also open some Bank Holidays but please call to check opening times.

How to contact us

Telephone: 01760 721230
Email: enquiries@swaffhammuseum.co.uk

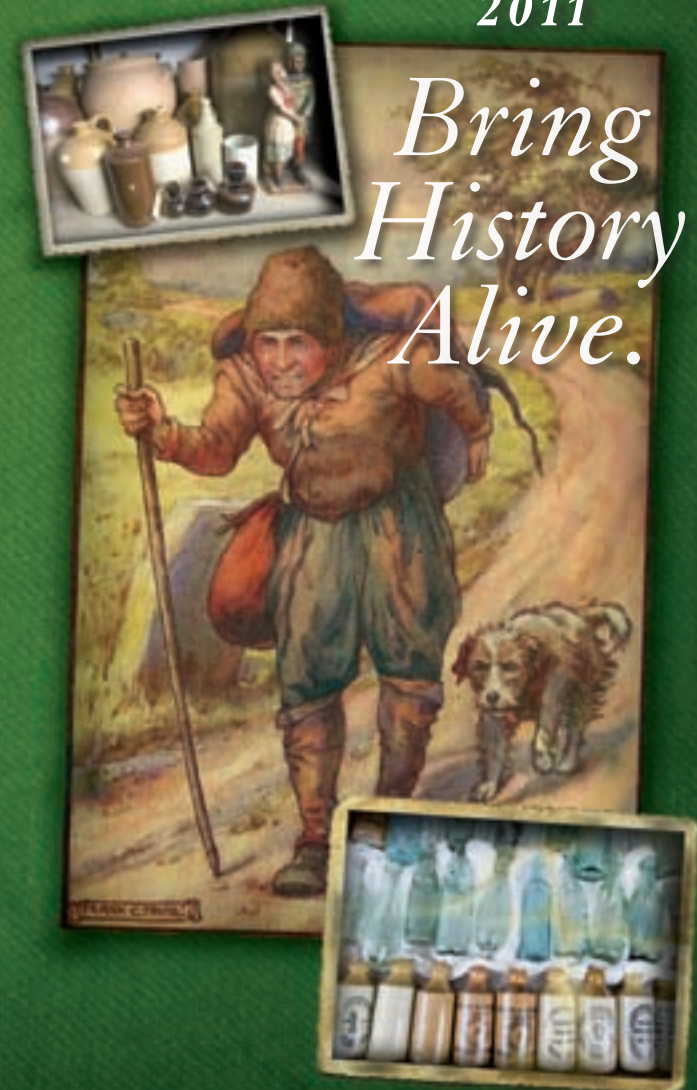
How to find us

Swaffham is on the A47, between Kings Lynn and Dereham. The museum is on the Market Place. Ample free parking nearby.



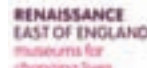
SWAFFHAM MUSEUM
4 London Street, Swaffham,
Norfolk PE37 7DQ
email: enquiries@swaffhammuseum.co.uk
www.swaffhammuseum.co.uk

Registered Charity 1120848.



The information in this leaflet is correct at the time of going to print, however variations may occur.

Design by Darren Leader Studio www.darrenleaderstudio.co.uk



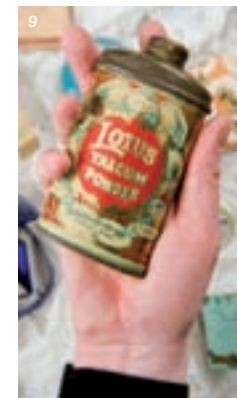
Swaffham Town Council



This jewel of a museum is set in a handsome townhouse on Swaffham's Georgian Market Place.

Explore elegant rooms, rich collections and 21st century displays with lots for all the family to enjoy.

Throughout the museum you'll find prints, paintings and stories drawn from Swaffham's rich heritage.



The Carter Connection

Find out how Swaffham man, Howard Carter discovered the magnificent tomb of King Tutankhamun. Dramatic displays really bring to life this exciting and exotic story. Audio visual display and fantastic collection of ancient Egyptian tomb artefacts on loan from the British Museum, some up to 4,000 years old.

The Archaeology Room

Fossils, Roman sandals, jars, military badges, coins and more, spanning Stone Age, Saxon and Roman periods. Plus the remarkable Sporle Palgrave collection – all discovered in nearby fields by a keen local archaeologist.

Local History Room

Settle in and enjoy browsing books, photo albums, scrap books and town magazines. Wonder at Harry Carter's fascinating Town Model completed in 1939 – how many buildings can you recognise?

NEW FOR 2011

Swaffham People, Swaffham Life

Visit our new Swaffham Social History Gallery where you will find a variety of exhibits chronicling the life and times of Swaffham and its people. Learn about the history and heritage of the town from a rolling program of displays throughout the year – visit our new, updated website for details of current presentations.

The Symonds Collection

Made by a local artist these fantastic figures depict costumed literary characters from J R Tolkien, Charles Dickens and William Shakespeare.



Egyptian Gallery (1 & 2), tomb reconstruction (3), The Archaeology Room (4 & 6), portrait of Howard Carter (5), Marmite and Bovril jars (7), Smoking pipes and Rolling pouch (8), Lotus Talcum powder (9).